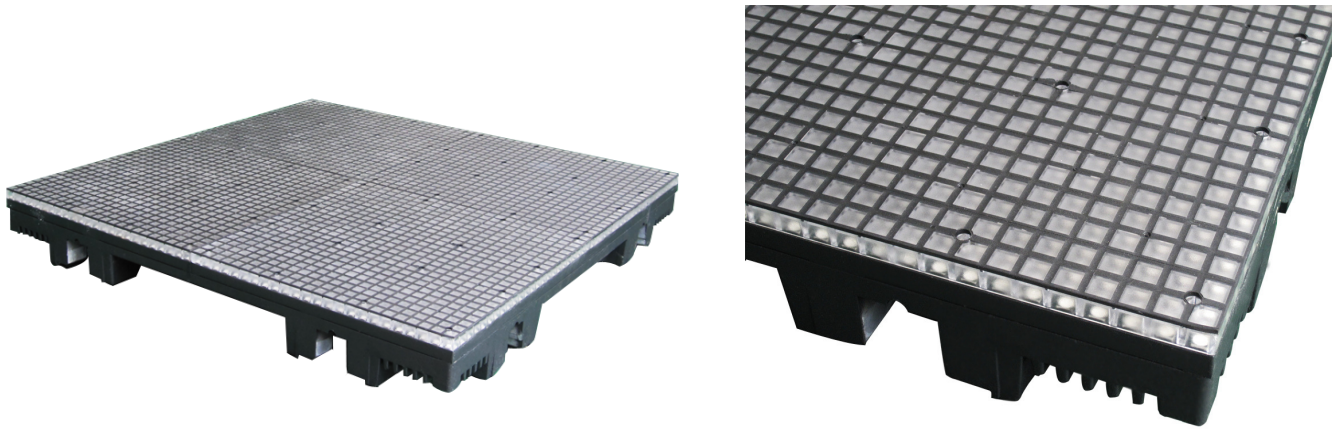


PALAMI-FLOOR DATASHEET



PALAMI LED floor represents strikingly light and slim LED equipment of new generation. Such solution has been successfully used to create amazing and interactive floors in some countries of Europe. Floor are very easy to prepare for work, and have long life at the same time. Furthermore, IK10 protects floor from any damage. High IP67 makes floor resistant to humidity and radiators fixed underneath the module guarantees protection from overheating.

Parameter	PALAMI-FLOOR-10	PALAMI-FLOOR-15
Physical pixel pitch, mm	10	15
Pixel configuration	1 (RGB)	1 (RGB)
Panel size, (mm)	480 (h) x 480	480 (h) x 480
Panel resolution, (pixels)	48 x 48	32 x 32
Brightness, (Cd/DOT)	5000	5000
Color depth, millions, more than	16.7	16.7
Viewing angle horizontal/vertical	120° / 120°	120° / 120°
Electric power supply	AC100~240V(50-60Hz)	AC100~240V(50-60Hz)
Maximum power consumption, (kW/m ²)	0.8	0.7
Average operational power consumption, (kW/m ²)	0.32	0.28
Ingress protection	IP65	IP65
Lifetime, not less than (hours)	100 000	100 000
Weight, (kg/panel)	12.5	12